

CONNECT.

EQUIP.

UNLEASH.

projectheart

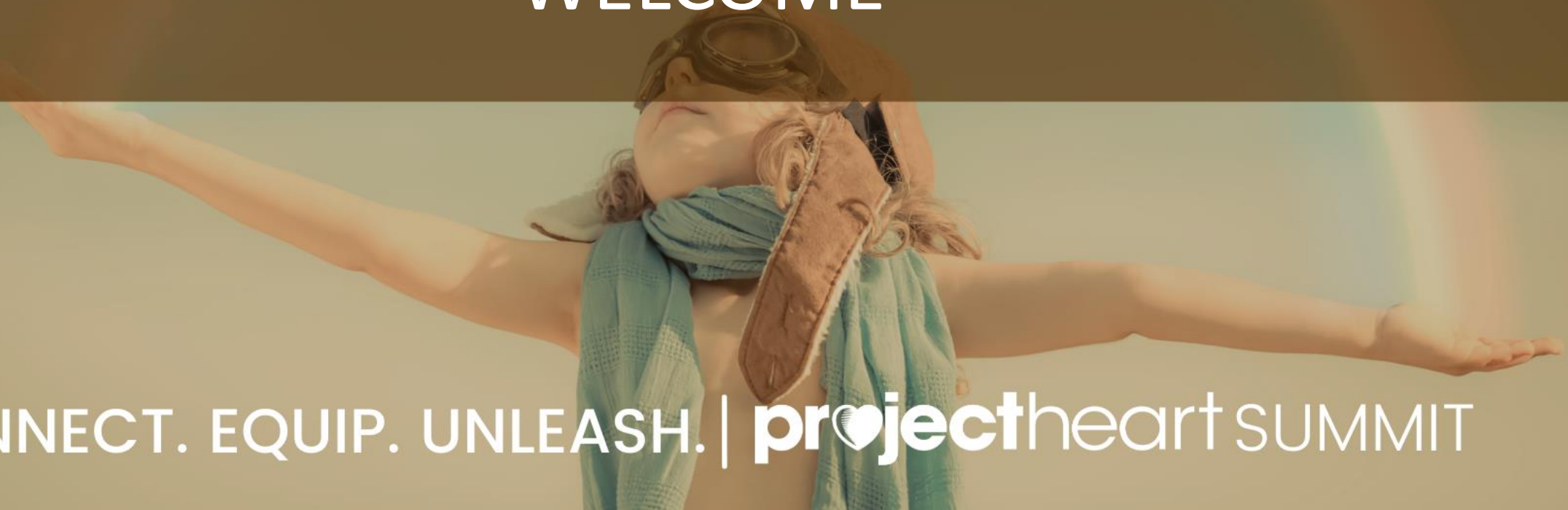
SUMMIT

 OTTERCARES

 MindSpark™



WELCOME



CONNECT. EQUIP. UNLEASH. | **project**heart SUMMIT

Housekeeping

- Fully packed schedule today, we won't take formally scheduled breaks but there will be time during working sessions to excuse yourself as needed
- Panel this afternoon: submit questions all-day using the Mentimeter
- School of Mines Credit
 1. Fill out the School of Mines form
 2. Make your check out to The School of Mines for \$50, this will secure you for 0.5 graduate level relicensure credit.
 3. If you did not bring a check today, please send via mail to MindSpark Learning (Attn: Kiki Huckaby) along with your form by 8/8/23 (455 S. Pierce St. Lakewood Co., 80226)
 4. For specific questions, please email kiki@mindspark.org

Project Heart: Why We Are Here

- Project Heart Origin Story
- Every Project Heart implementation is unique, there's no single "Right Way" to do Project Heart
- Today is designed to celebrate that individuality and to provide resources for you to determine what Project Heart could look like for you



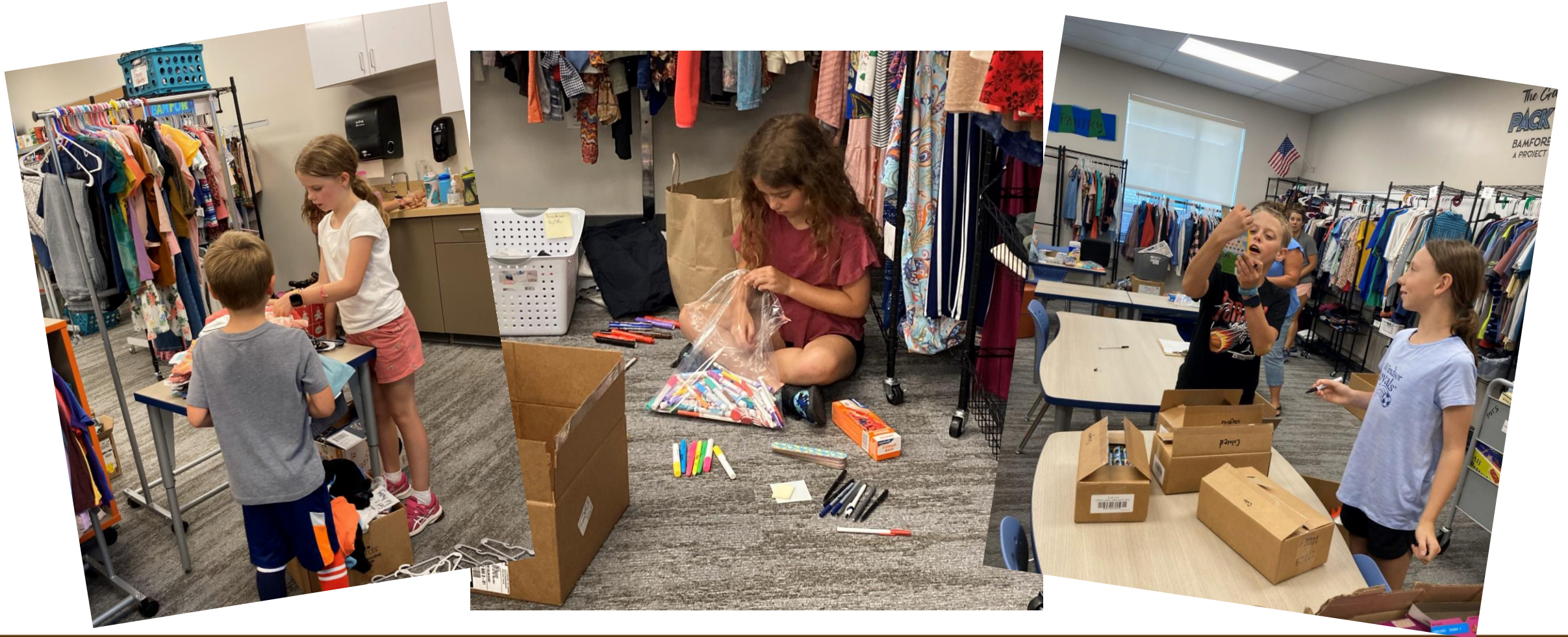
The Student Voice

Madeline & Linda Crum



CONNECT. EQUIP. UNLEASH. | **project**heart SUMMIT

Bamford Students & The Pack Pantry



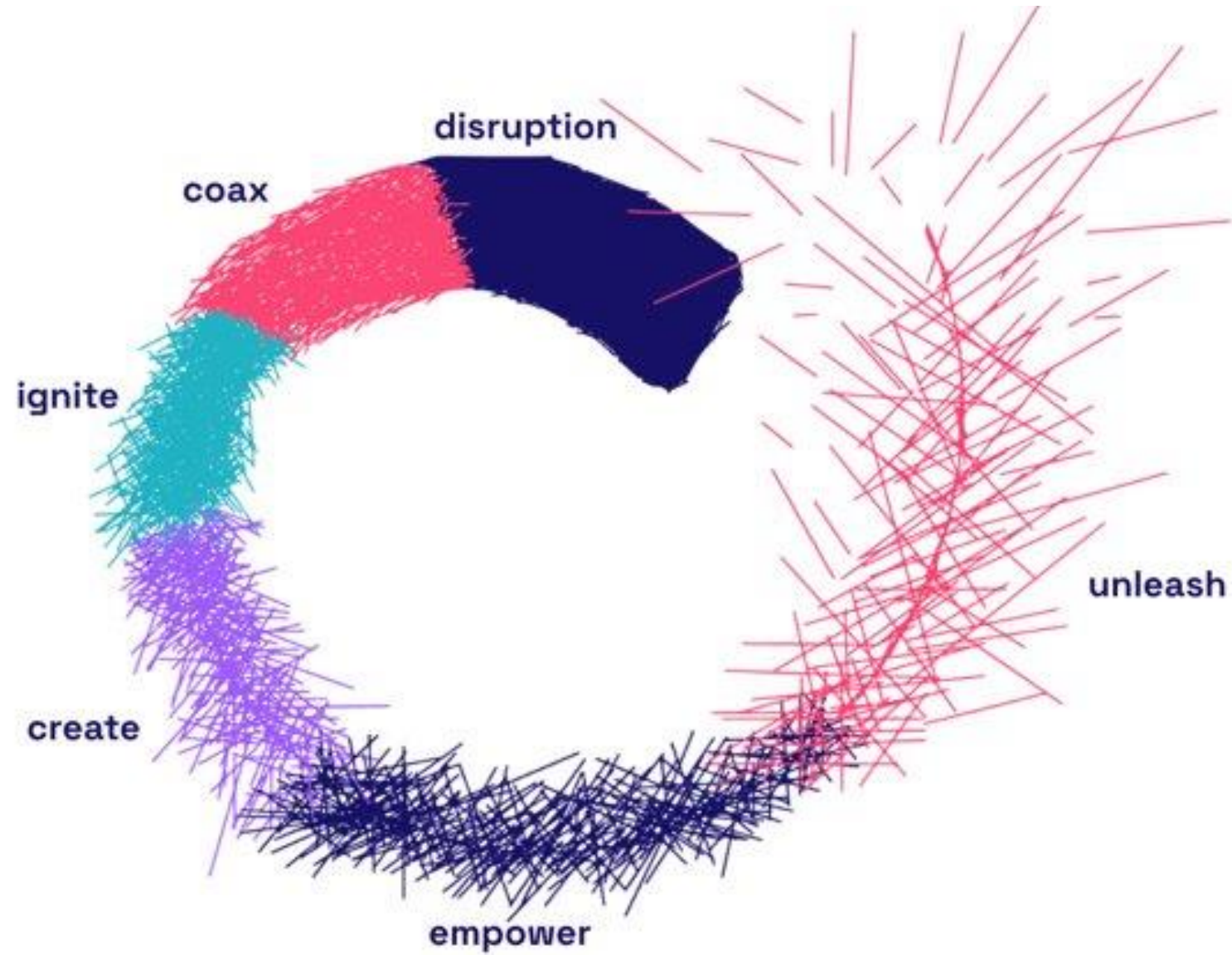
CONNECT. EQUIP. UNLEASH. | **projectheart** SUMMIT



Philanthropic Challenge



CONNECT. EQUIP. UNLEASH. | **project**heart SUMMIT



CONNECT. EQUIP. UNLEASH. | **project**heart SUMMIT

Philanthropic Challenge

- You will be divided into 10 groups, each group will be assigned a nonprofit organization
- We will play three “Minute to Win It Games” to earn points, the number of points your team earns will determine the number of items you will get to “shop” for your nonprofit
- After the games, your team will have 15 minutes to choose items to assemble a care package and craft a short pitch about your assigned nonprofit and why you chose the items you did for their care package

Minute to Win It Games

- Face the Cookie (send 1 team member)
 - Begin with a cookie on your forehead and without using your hands try to get the cookie from your forehead to your mouth. Repeat two times. The first person to get both Oreos into their mouth wins!
- Back2Back (send 2 team members)
 - Two members from each team will sit back to back with their arms interlocked. The members will then see how many times they can stand up and sit back down within one minute. The team with the largest number wins!
- Penne Pick Up (send 1 team member)
 - Using a spaghetti noodle held in your non-dominant hand, you will pick up a single penne noodle and transfer it from the plate into a cup. The person with the most noodles in their cup at the end of one minute is the winner!

Nonprofit Care Package & Pitch

- As a team, read the info sheet on your assigned nonprofit and any supplementary websites or info provided
- Based on what you have learned, choose 5-7 items from our shopping area to put in your care package
 - 21+ points from Minute to Win It games = 7 items
 - 11-20 points from Minute to Win It games = 6 items
 - 1-10 points from Minute to Win It games = 5 items
- Create a 90-second pitch that explains who your nonprofit is, what they do, and why you chose the items in your care package
- When time is called, a representative from your team will share the pitch



What Is Philanthropy?

Janelle Joers

CONNECT. EQUIP. UNLEASH. | **project**heart SUMMIT

Philanthropy Word Cloud

Share one word or phrase that comes to mind when you think of the word

PHILANTHROPY

Visit www.menti.com and enter code: **8189 8510**

Or

Scan the QR CODE on your table

LIVE WORD CLOUD RESULT

The 3Ts of Philanthropy

- Foundation of Project Heart
 - Time
 - Talent
 - Treasure

The 3Ts of Philanthropy

- Project Heart Activity
 - Grade Level Options

- Discussion at table
 - Sentence/question stems



Question Stems for Discussion

General Question Frames:

Why is it important to teach philanthropy?

What if all of your students became philanthropists? How would your classroom change?

How is philanthropy related to my personal teaching philosophy?

What would happen if I incorporated the 3 T's into my life this year?

Analytical Questions:

Why would using Project Heart be beneficial to you and your students?

What is the relationship between philanthropy and your students?

Application Questions:

How do you see Project Heart playing out in your world?

What approach would you use to teach your students the 3 T's?

Evaluative Questions:

Why would teaching the 3 T's be necessary?

What are the pros and cons of teaching the 3 T's?

You-Fill-in-the-Blank Questions:

What are the biggest effects of _____?

How would you create a _____?

Defining Philanthropy for our Students

- What does it look like for an educator?
- What does it look like for a student in our class or club?

Ask Questions for our Panel

Visit www.menti.com and enter code: **8189 8510**

Or

Scan the QR CODE on your table





The Project Heart Impact

Alissa Poduska



CONNECT. EQUIP. UNLEASH. | **project**heart SUMMIT



hi!

hello!





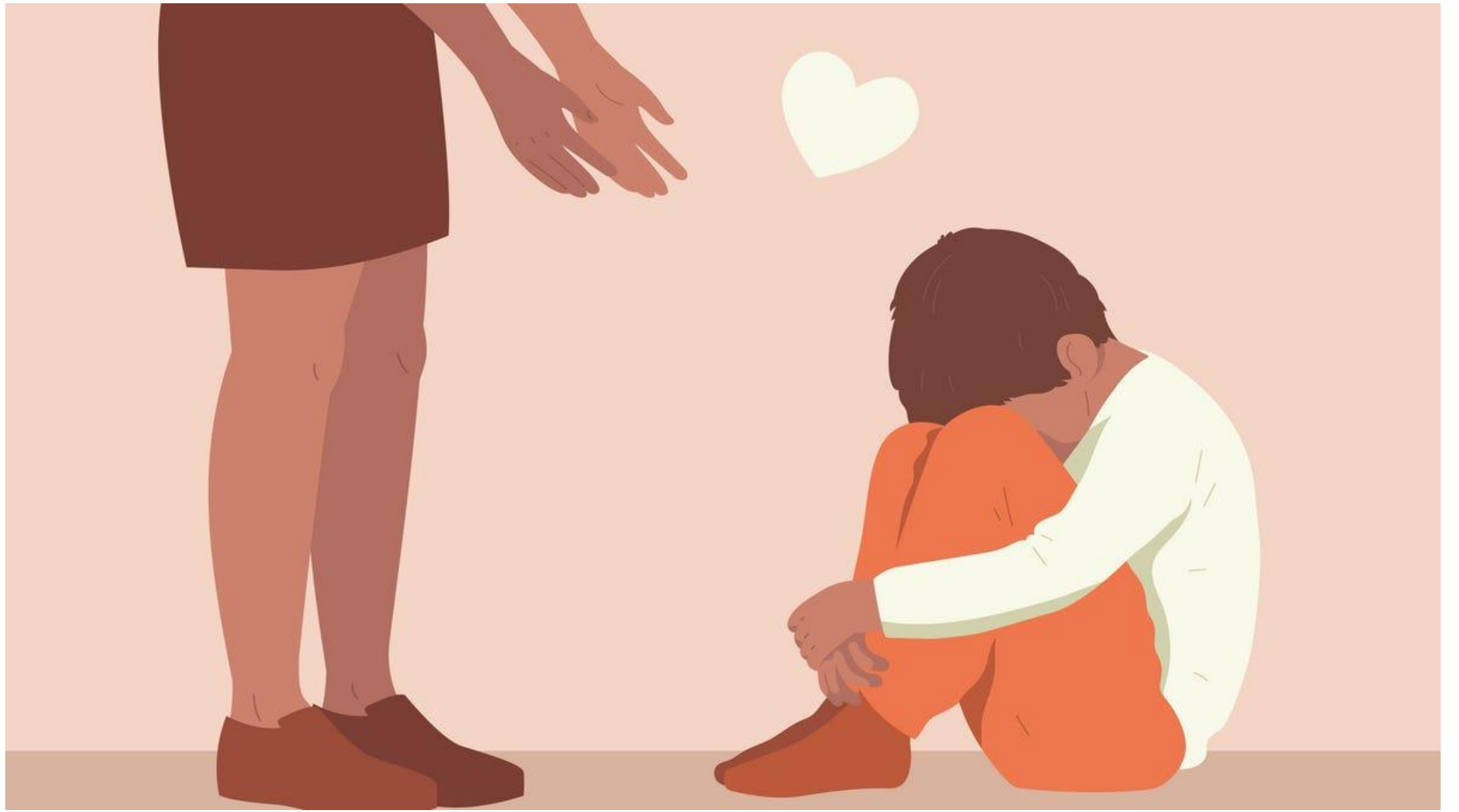


Skills for the future

- Empathy Lens
- Problem-Finders, Solution Seekers
- Creativity
- Collaboration
- Career Exposure
- Passions and Interests
- Workforce Belonging
-











DATA



KNOWLEDGE



ACTION



Together Through Project Heart

- Help them see they can make a difference
- Help them see they can improve lives
- Help them see that they belong
- Help them see paths for their future
- Instill empathy for themselves and others

BAMFORD ELEMENTARY SCHOOL'S PACK PANTRY



As adults who care deeply for children, our most urgent work is to help the young people we care for develop the mental habits for emotional health and wellbeing.

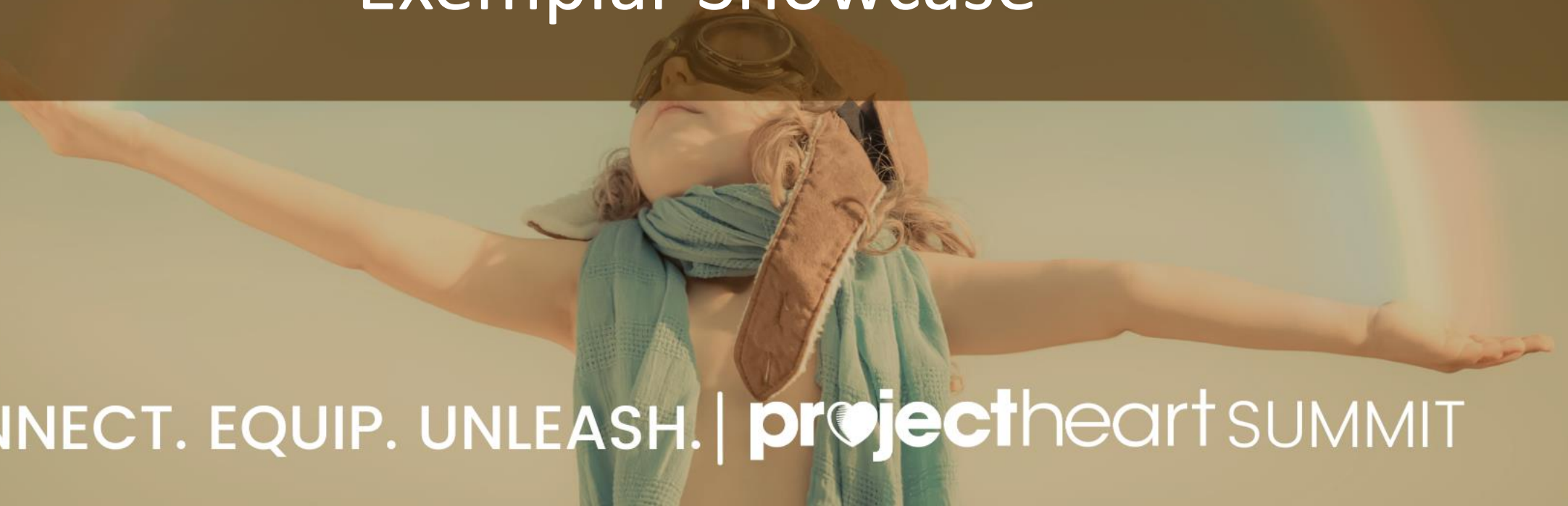
We can change the world one child at a time - this is our gift to the next generation.

- Kari Sutton

CONNECT. EQUIP. UNLEASH. | **project**heart SUMMIT



Exemplar Showcase



CONNECT. EQUIP. UNLEASH. | **project**heart SUMMIT

Exemplar Showcase Overview

- Exemplars are set-up at tables in the gym (think science-fair style)
- Participants can rotate at leisure to visit as many exemplars as they would like
- To help control the flow of traffic, exemplars will use color cups as a visual cue
 - Green = waiting for people to arrive
 - Yellow = will start presentation in 30-60 seconds
 - Orange = presentation has started
- This session will last until 11:10, we will provide a 5-minute warning
- Return to the cafeteria after this session for details on our next session




Content: Using Project Heart

CONNECT. EQUIP. UNLEASH. | **project**heart SUMMIT

Content Breakout Rooms

- Getting Started with Project Heart- Sarah Weeks in the Cafeteria
 - For anyone brand new to Project Heart or anyone wanting a high-level overview of the program and instructional resources
- Level-Up Your Project Heart- Kiki Huckaby in the Art Room
 - For current Project Heart users who want to take their implementation to the next level, or for anyone who is familiar with what Project Heart offers but not sure yet how to start implementing it
- Project Heart for Administrators- Alissa Poduska in the Pack Pantry
 - For building or district-level administrators exploring how to support Project Heart implementation from a larger strategic lens



Getting Started with Project Heart

Sarah Weeks

CONNECT. EQUIP. UNLEASH. | **project**heart SUMMIT

Getting Started with Project Heart

START HERE ▾

PROJECT HEART IN ACTION

RESOURCES ▾

CONTACT US



- Create an account
- Find Inspiration
- Save Favorites
- Stay Connected

A banner for Project Heart featuring a dark background with a network of glowing white lines and bright sparkler-like bursts. The Project Heart logo is overlaid on the left side of the banner.

projectheart

IGNITING A
MOVEMENT OF
PHILANTHROPY

CONNECT. EQUIP. UNLEASH. | projectheart SUMMIT

The Website – Your Hub!

- <https://myprojectheart.org/>
- Register or Login
- Explore! Find:
 - Project Heart in Action
 - Standalone Resources
 - Blog
 - Curricular Lessons
 - Favorites
 - Members Only Resources
 - Navigate between the Main Page and your Dashboard

A child with their arms outstretched, wearing a blue scarf and a brown hat, stands in front of a bright, colorful rainbow. A small wooden airplane is flying in the sky above the child. The scene is set against a soft, hazy background.

Engaging with Nonprofits & Community Partners

Janelle Jors

CONNECT. EQUIP. UNLEASH. | **project**heart SUMMIT

Researching

- Where to start?

- Websites

- [NoCo Volunteers](#) (United Way of Larimer County - specific to Northern Colorado)
 - [Colorado Gives 365](#) (Listing of nonprofits around Colorado that is searchable by cause area and location)
 - [Loveland Chamber of Commerce](#)
 - [Fort Collins Chamber of Commerce](#)
 - [Windsor Chamber of Commerce](#)
 - [Greeley Chamber of Commerce](#)

- Google searches - “nonprofits in _____, CO”
 - Personal connections
 - School connections
 - Networking connections from this Summit!

Creating Partnerships

- Listen to the needs of the nonprofit
 - Understand why the HOW can become a barrier
 - Needs & wants
 - Looking for volunteers
- Get students invested ~ real-world skills
 - Email prior
 - Write scripts and have students practice prior to contacting
 - Phone
 - Phone etiquette lesson
 - Email
 - Email etiquette lesson

Maintaining Partnerships

- Follow up
- Send thank yous
 - You
 - Students
- Request feedback from the partnership
 - What went well
 - What could be improved

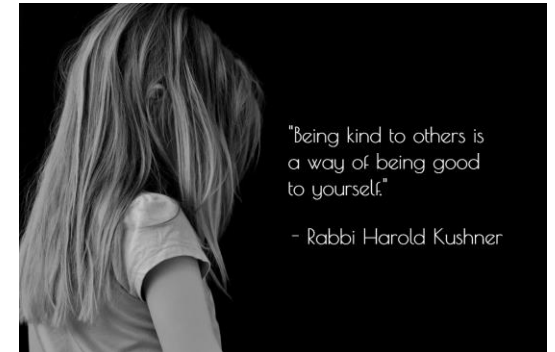


Ask Questions for our Panel

Visit www.menti.com and enter code: **8189 8510**

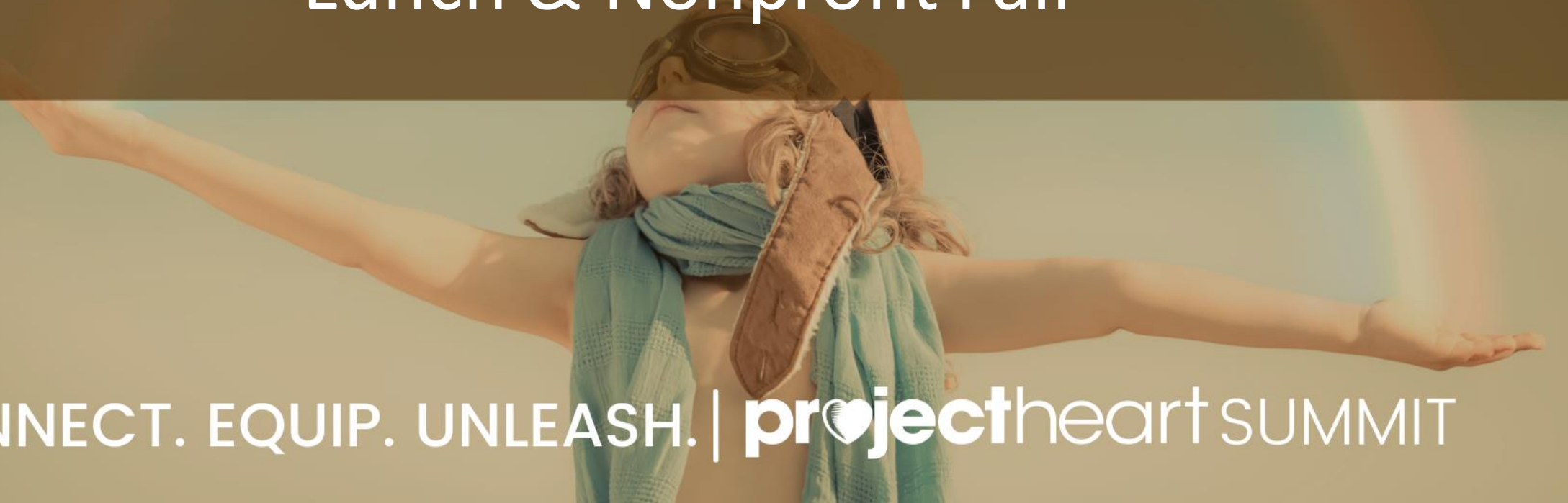
Or

Scan the QR CODE on your table





Lunch & Nonprofit Fair



CONNECT. EQUIP. UNLEASH. | **project**heart SUMMIT

Instructions for Lunch & Nonprofit Fair

- Lunch and nonprofit fair will run until 1:45pm, we will give a 5-minute warning on the intercom
- To help control the traffic flow, we're asking that Group A visit the nonprofit fair first and Group B eat lunch first
- Feel free to self pace your transition but we will make an announcement around 1:05pm to switch locations if you haven't
- At 1:45pm, please return to the cafeteria for our next session

A child wearing a pilot's hat and goggles with a scarf around their neck has their arms outstretched. In the background, a wooden biplane is flying in a sky with a rainbow and some sparkles.

Demystifying Project Heart Panel

CONNECT. EQUIP. UNLEASH. | **project**heart SUMMIT

Project Heart Panelists

- Kiki Huckaby, MindSpark Learning
- Janelle Joers, retired Middle School ELA teacher
- Alissa Poduska, Bamford Elementary Principal
- Kris Odenbaugh, Olander Elementary 4th grade teacher
- Sarah Weeks, OtterCares Foundation & Former Elementary Educator

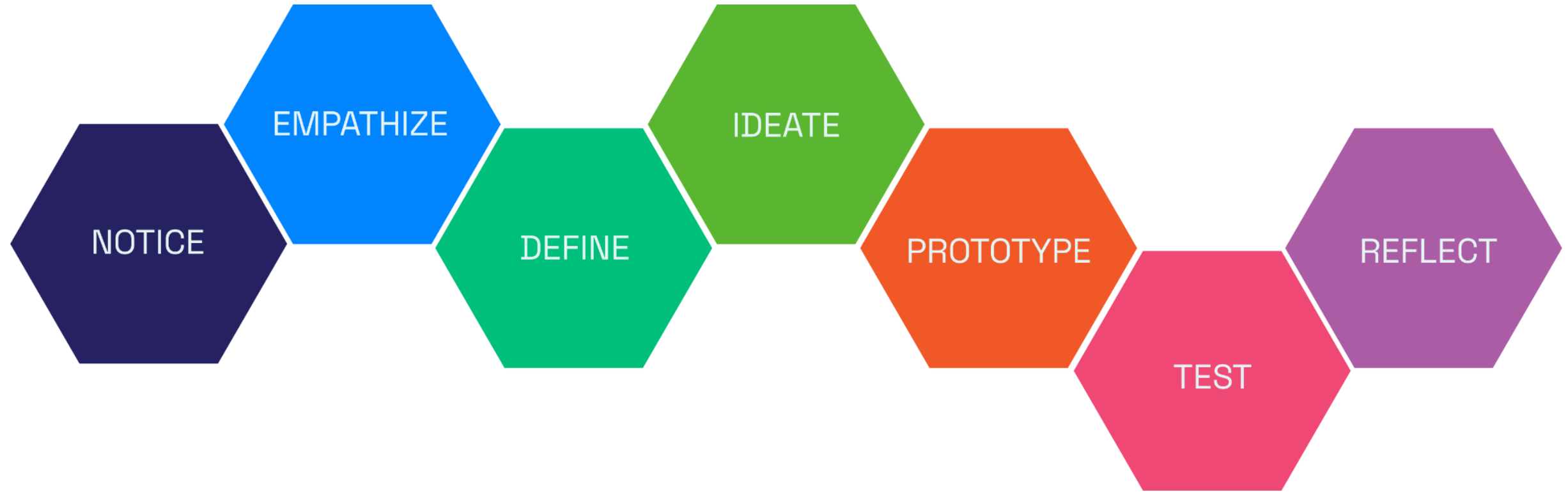


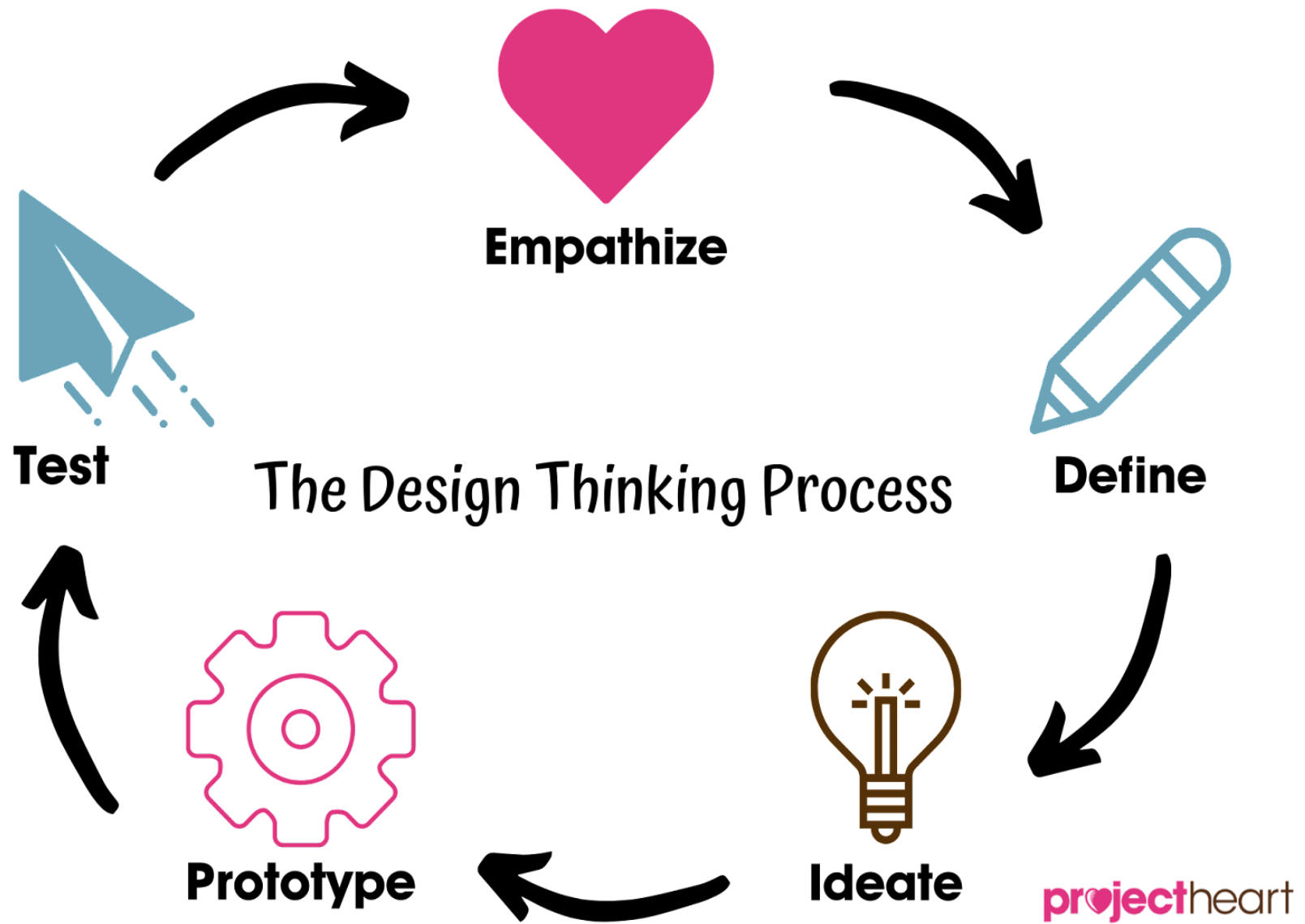
Application Time



CONNECT. EQUIP. UNLEASH. | **project**heart SUMMIT


Equity Centered Design Thinking





Bit.ly/3OjBN69

Course Information	
Grade/Subject:	Unit:
Periods/Times:	Timeframe:
Intended Standards:	Special Populations/Differentiations:
Project Development	
Source of Project Idea:	Compelling Context (Research):
Non-Profit Partners:	How will you incorporate the 3 T's into your plan?
Root Causes:	Stakeholders:



Potential Problem/Project Idea:

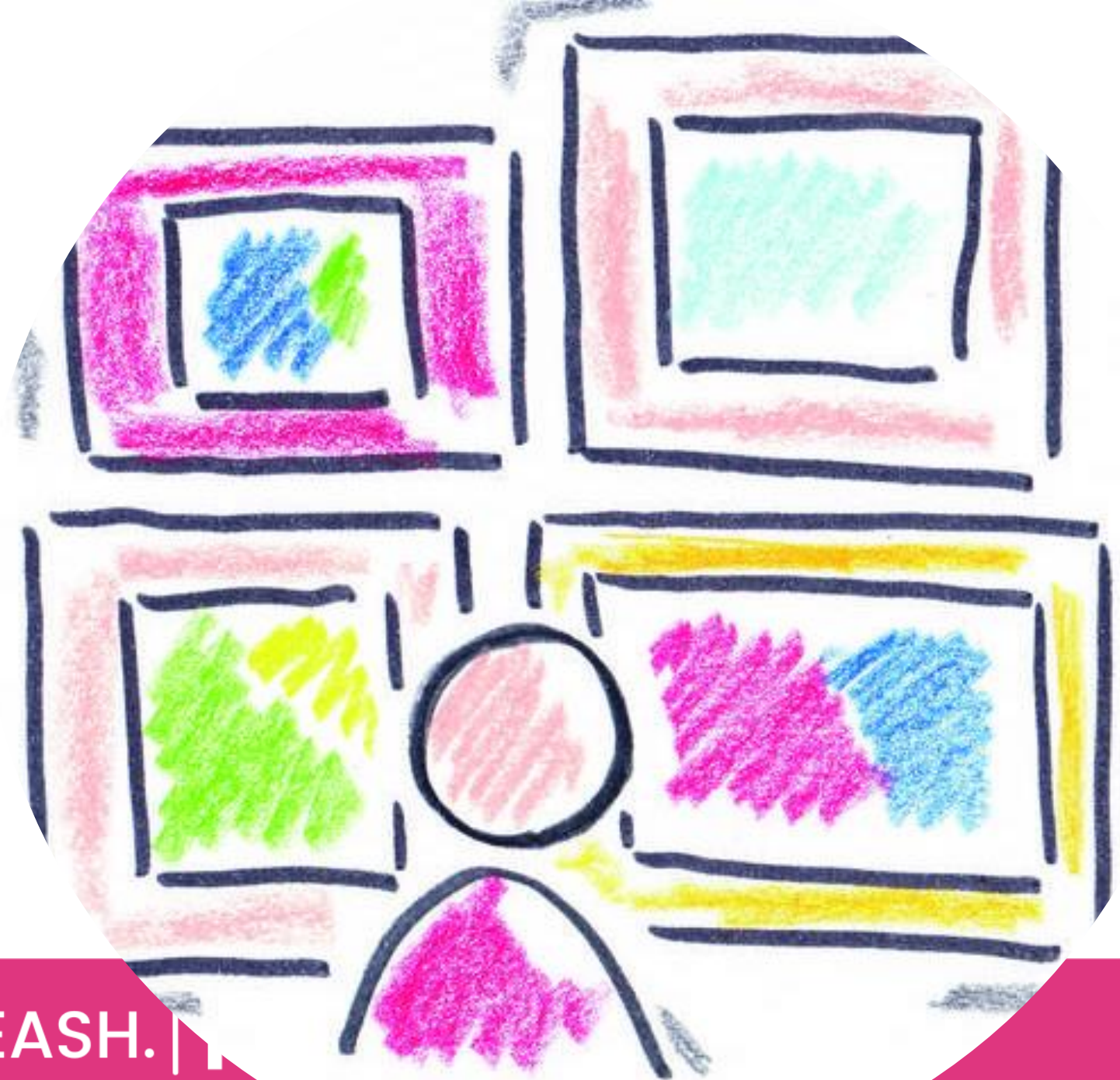
**(user) needs a way to (need)
because/so that (insight)**

Potential Non-Profit Partners:

Empathy Activity:

**Curriculum/Standards
Connection:**

1. Contribute to other posters (include your contact info if you can support)
2. Take notes back to your own poster
3. Identify similarities and differences between all ideas



CONNECT. EQUIP. UNLEASH. | 11



Be the Spark

Kristin Todd

President & CEO- Community Foundation of Northern Colorado

CONNECT. EQUIP. UNLEASH. | **project**heart SUMMIT

WHAT IS PHILANTHROPY?

phi·lan·thro·py

The desire to promote the welfare of others, expressed especially by the generous donation of money to good causes.

WHAT IS PHILANTHROPY?

phi·lan·thro·py

~~The desire to promote the welfare of others, expressed especially by the generous donation of money to good causes.~~

Generosity in all its forms. Often defined as giving gifts of “time, talent and treasure” to help make life better for other people.

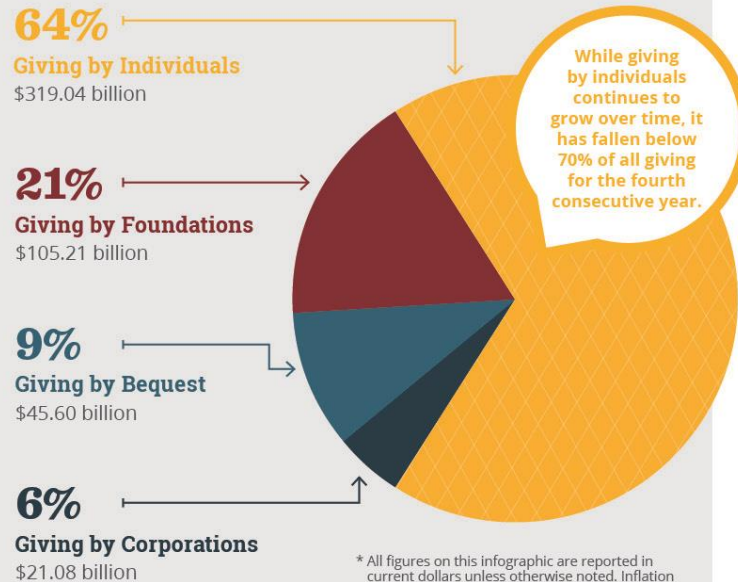
PHILANTHROPY – THE BIG PICTURE

In 2022, Americans gave **\$499.33 BILLION** to charity

DONOR ADVISED FUNDS ARE AMONG THE FASTEST GROWING FORMS OF GIVING.

Where did the generosity come from?*

CONTRIBUTIONS BY SOURCE (by percentage of the total)



* All figures on this infographic are reported in current dollars unless otherwise noted. Inflation was especially high in 2022, at 8.0%, and results may differ when adjusted for inflation.

Where did the charitable dollars go?

CONTRIBUTIONS BY DESTINATION (by percentage of the total)



Despite uneven results in 2022, six of nine subsectors continue to exceed pre-pandemic levels, even when adjusted for inflation.



Giving to **international affairs** organizations grew by 10.9% in 2022, in part due to donors responding to world events.



El Pomar Foundation





Daniels Fund



Generosity

IMAGINE a world where people give of themselves simply because they want to. Not out of a sense of debt. Or because they want something in return. No ulterior motives. No guilt feelings. Just the desire to give for the sake of giving. Now, instead of imagining this kind of world, do your part in

making it happen. Make a charitable donation. Volunteer your time to improve your community.

Give back to the world that gives so much to you.

And if it happens to make you feel good to give, that's all right.

Feeling good is the one ulterior motive that's acceptable.





Community Foundation of Northern Colorado

MISSION:

Create transformational community impact by inspiring philanthropy and engaging the region.

VISION:

Creating Impact. Leaving Legacy.

MY TAKEAWAYS ABOUT PHILANTHROPY

- Philanthropy is a fancy word for generosity, kindness, giving back
- Philanthropy is being part of something bigger than yourself
- Philanthropy inspires empathy and compassion
- Anyone can be a philanthropist
- Philanthropy is a learned behavior
- Philanthropy changes lives and communities for the better
- Philanthropy builds better, more engaged citizens
- “P”hilanthropy vs “p”hilanthropy

INSPIRING THE NEXT GENERATION

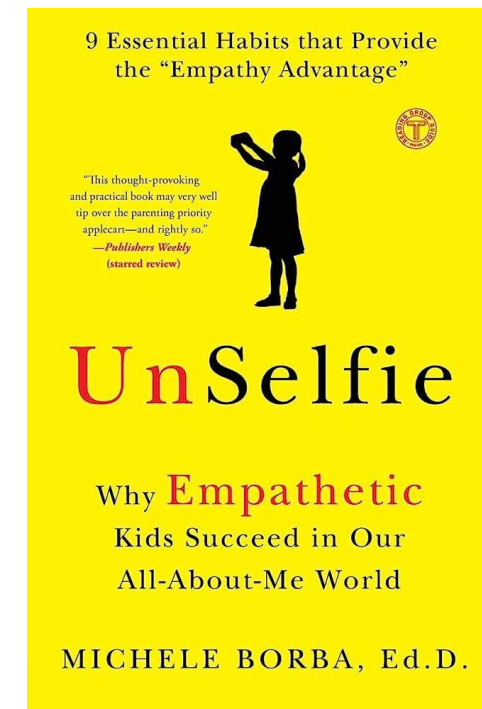
Philanthropy can be a game-changer for kids:

- Equalizer
- Builds confidence and self-esteem
- Inspires compassion and empathy
- Antidote to depression
- Sense of purpose
- Greater understanding of the community they're a part of
- Provides new perspectives



INSPIRING THE NEXT GENERATION....HOW?

- Modeling/discussing philanthropy
- Encouraging curiosity
- Class volunteer project
- Share Save Spend model
- “Help others in emergencies” fund
- Classroom guest speakers
- Books, articles
- Teacher Peer Groups
- Project Heart
- Other ideas??



THANK YOU
FOR BEING THE SPARK!!



A child wearing a pilot's hat and goggles with a scarf around their neck has their arms outstretched. In the background, a wooden airplane is flying, and a rainbow is visible in the sky.

Next Steps & Additional Resources

CONNECT. EQUIP. UNLEASH. | **project**heart SUMMIT

Follow Up Sessions

Register for follow-up sessions to support your planning:

August 8th OR August 9th from 3:30-5:30



EDUCATION ACCELERATOR

HERE TO HELP

Introducing the Project Heart Education Accelerator (EA) powered by OtterCares and MindSpark Learning, a program aimed at assisting schools and districts in devising an implementation plan to utilize Project Heart resources effectively. The focus is on fostering impactful philanthropic experiences for students, leading to heightened empathy and engagement, a more meaningful and relevant learning purpose, and a greater desire among students to become changemakers in their schools and communities. This accelerator is designed for educators who are enthusiastic about reimagining traditional education models.



Kids possess the potential to transform the world, and educators play a crucial role in making it a reality!



Cost

Contributions from Ottercares have reduced the price of EA from \$10,000 to \$1,000 per school/team.



Expectations

Each school/district team will implement a philanthropic project that has a transformational impact in their community.



Logistics

The EA requires a team of 3-8 people. This group needs to include at least one decision maker (Principal, AP, District Personnel, etc.) and can include others such as Academic Coaches, teachers, etc.

Dates & Timelines



- Kick Off- October 5th (full day in person)
- November (full day in person)
- December 1 hr. Virtual check in
- January (full day in person)
- February 1 hr. Virtual check in
- March (full day in person)
- April 2 hr. Culmination in person

To register please fill out [this application](#)

OR



MindSpark®

projectheart

OTTERCARES

Support from OtterCares

- Implementation Support from our staff
- Illumination Fund Grants
 - Up to \$500 for materials or matching dollars for student-led projects arising from your use of Project Heart
- Impact Fund dollars for bigger idea projects
 - EX: High Plains Middle School Day of Service, Girl Scout Patch Program
- Subsidized Project Heart Education Accelerator
 - Apply by August 31st, contact Tricia Vincent or Kiki Huckaby

Gratitude & Parting Gifts

- OtterBox Backpack Coolers for all attendees- be sure to take one on your way out!
- Table Centerpiece Giveaway: whoever at the table has a birthday that is closest to today
- Special Recognition: Bamford Elementary

Philanthropy Word Cloud

Share one word or phrase that comes to mind when you think of the word

PHILANTHROPY

Visit www.menti.com and enter code: **8189 8510**

Or

Scan the QR CODE on your table

LIVE WORD CLOUD RESULT

Feedback

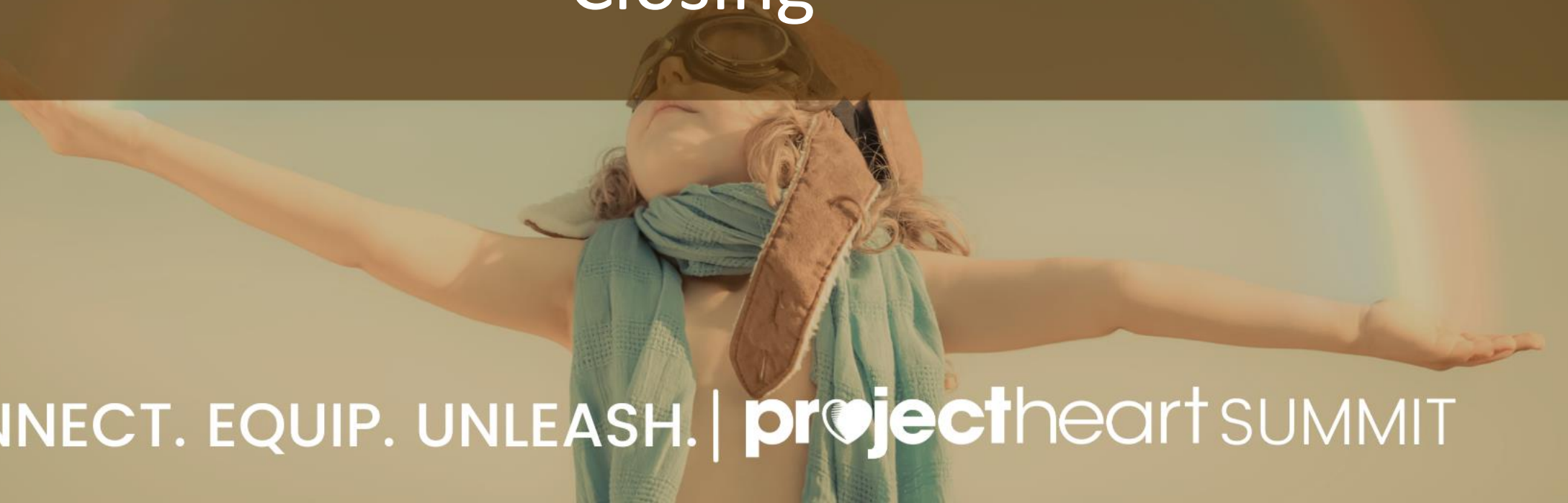
Visit www.menti.com and enter code: **8189 8510**

Or

Scan the QR CODE on your table



Closing



CONNECT. EQUIP. UNLEASH. | **project**heart SUMMIT